



**CENTRAL SUPPLIER
DATABASE**
FOR GOVERNMENT



PURPOSE OF THE CSD

The Central Supplier Database (CSD) is a single database that serves as the source of all supplier information for all spheres of the South African government.

This reduces duplication of effort and cost for both supplier and government, while enabling electronic procurement processes. Suppliers need to self-register on the CSD website www.csd.gov.za. Information related to successfully registered CSD suppliers is available to all Organs of State in electronic format.

BENEFITS OF THE CSD

- Supplier self-registration places the responsibility for up-to-date, complete and accurate supplier information, back on the supplier.
- Single source of all supplier information for all Organs of State, with the same supplier information available to all Organs of State.

- Suppliers in good standing on the compliance requirements of government, will experience a reduction in red tape and administrative burden when doing business with government.
- CSD fully aligned to new PPPFA regulations to allow Organs of State to identify and source from suppliers who are at least 51% black owned by black people, youth, women, military veterans, cooperatives, people with disabilities and people living in rural areas or townships.
- Reduce and eliminate duplication of effort and cost for both business and government, while enabling electronic procurement processes.
- Standardised and electronic verification of supplier information will lead to reduced fraud, audit queries and a significant reduction in manual processes and paper copies.
- Allows government to more effectively implement SCM policies and practices applicable to suppliers.

COMPLIANCE VERIFICATION OF SUPPLIERS

CSD electronically verifies and on a daily basis re-verifies the following compliance information of all CSD-registered suppliers:

- Tax clearance verification of suppliers with SARS
- Business registration and business directorship verification of businesses registered with CIPC
- Inclusion in the register for Tender Defaulters and Database of Restricted Suppliers
- Government employee verification, by performing a real-time check to determine whether any director/member/owner of a supplier registered on the CSD, is employed by an Organ of State
- South African ID Numbers are checked against Home Affairs (DHA)



national treasury

Department:
National Treasury
REPUBLIC OF SOUTH AFRICA



Since the introduction of the Central Supplier Database(CSD) on 1 September 2015, thousands of suppliers and prospective suppliers, representing businesses and enterprises across virtually each sector of the South African economy, have registered on the CSD. Below, the key attributes, as well as important characteristics of these suppliers, users and Organs of State using the CSD information, are represented in summarised format.



440,000

Registered Users



315,000

Successfully Registered
Suppliers



83,000

Partially Registered
Suppliers



709

Organs of State enabled
to use the CSD



10,859

Practitioners searching
CSD information



123

Back-Office Systems
commenced with CSD
integration



25

Back-Office systems
regularly access CSD
information



54%

Of Suppliers that have
provided Ownership
information, are at least
51% Black-Owned



14,178

Directors have
been identified as
Government
Employees



**OWNERSHIP
OF SUPPLIERS**

As at 31 March 2017, more than 53,000 CSD suppliers have successfully updated ownership information, with about 2,500 additional suppliers providing this information daily.

Based on the ownership information provided by this group of suppliers:



474

Owners of Suppliers are Disabled



636

Owners of Suppliers are Military Veterans



19,646

Owners of Suppliers are Youth



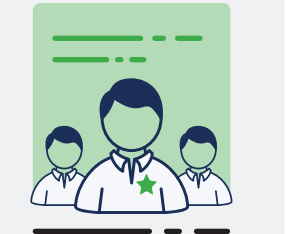
19,192

Owners of Suppliers are Women



4,580

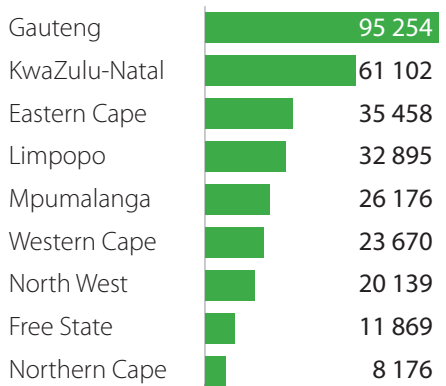
Owners of Suppliers live in Rural Areas or Townships



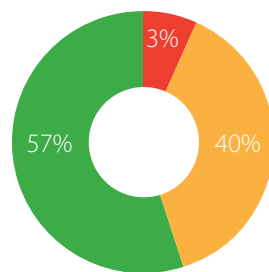
54%

Of Suppliers are at least 51% Black-Owned

**CSD SUPPLIERS
PER PROVINCE**



**TAX COMPLIANCE OF
SUPPLIERS**



■ Tax Compliant
■ Non-Compliant Tax Status
■ Not Registered for Tax

**SUPPLIERS PER
B-BBEE LEVEL**

